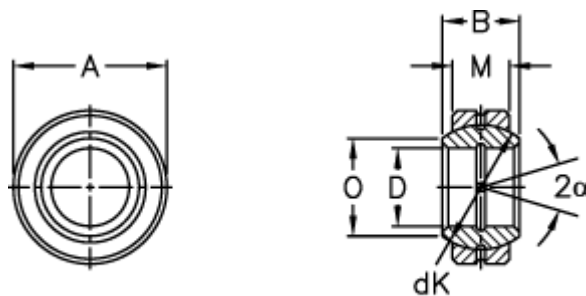


Article number: 03500090

Description: Fluro Rod end GE 90E

Measures



Str. 6–12 uden smørerille

A	= 130 0 -0,018	Tilt angle = 5
B	= 60	Weight = 2700
D	= 90 0 -0,020	
dK	= 115	
Dynamic load C (kN)	= 490	
M	= 50	
O	= 98.1	
Static load C0 (kN)	= 2450	